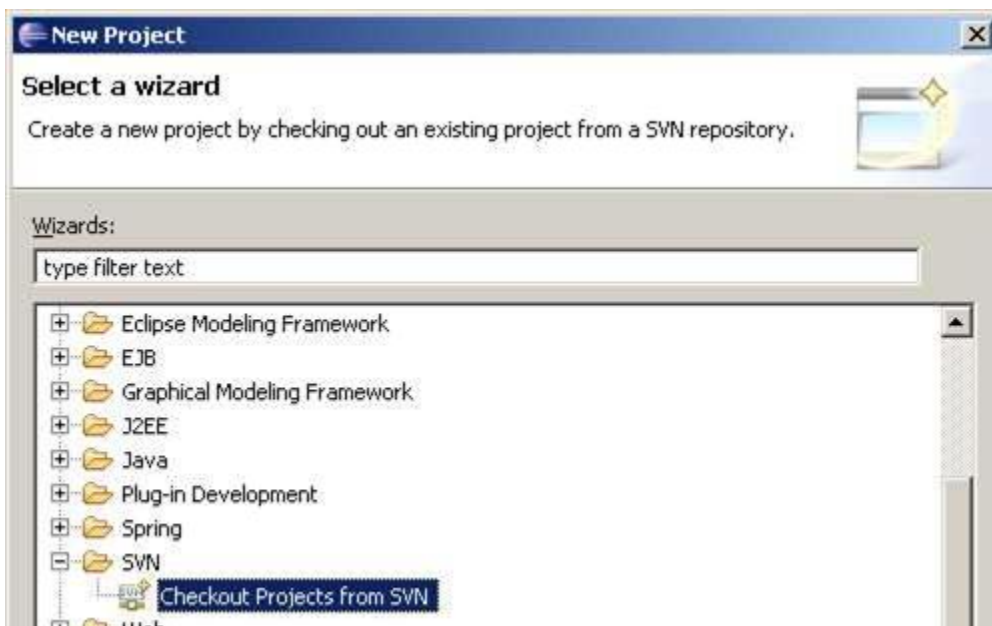
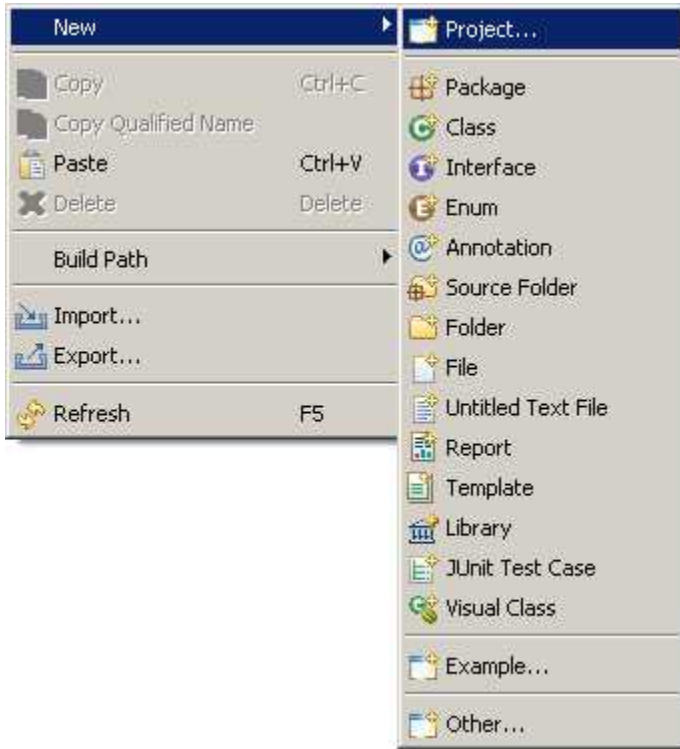
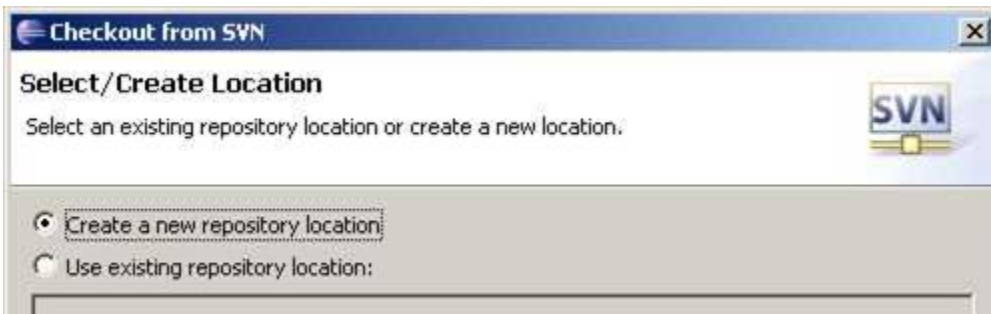


02 Create the esup-commons project

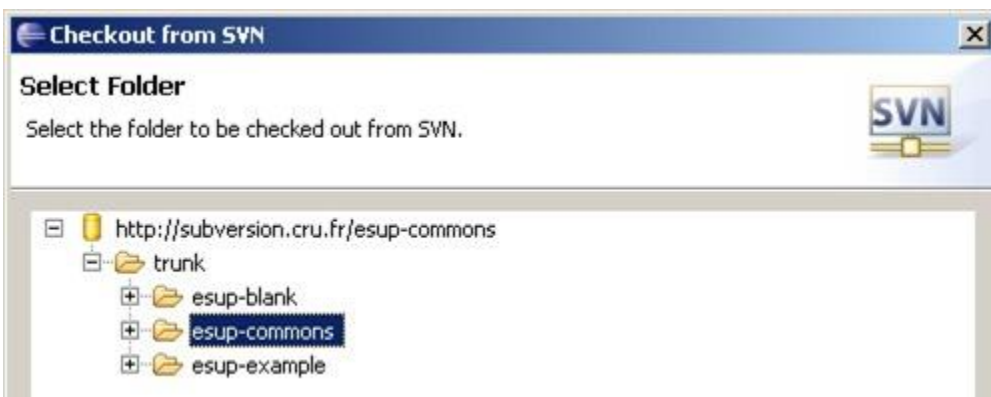
- [Checkout from the SVN repository](#)
- [Create the folders](#)
- [Configure the source folder, the build path and the libraries](#)
- [Apply Checkstyle to the esup-commons project](#)

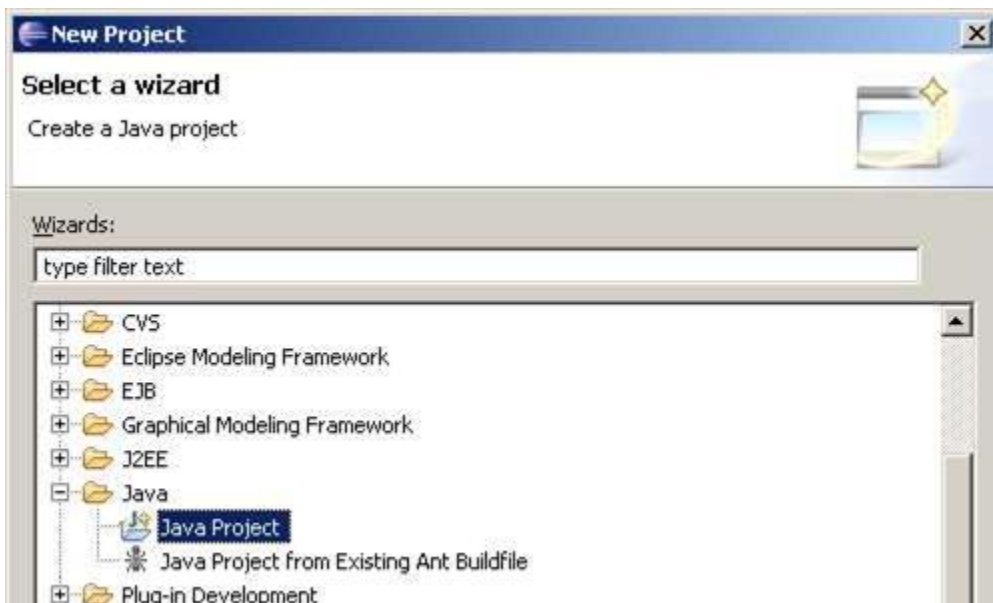
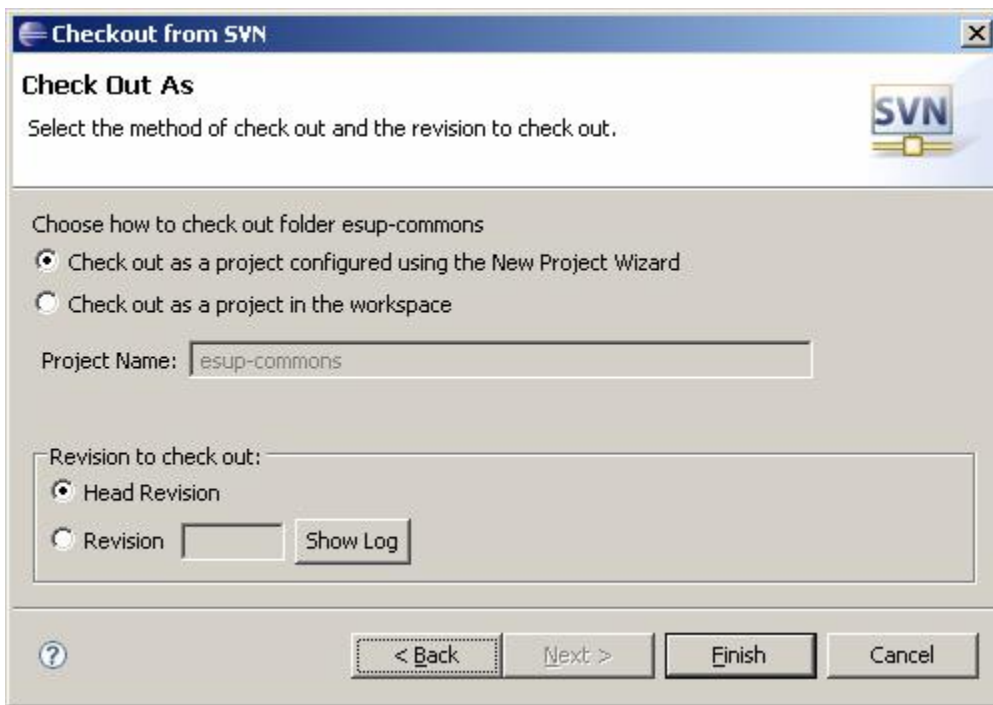
Checkout from the SVN repository



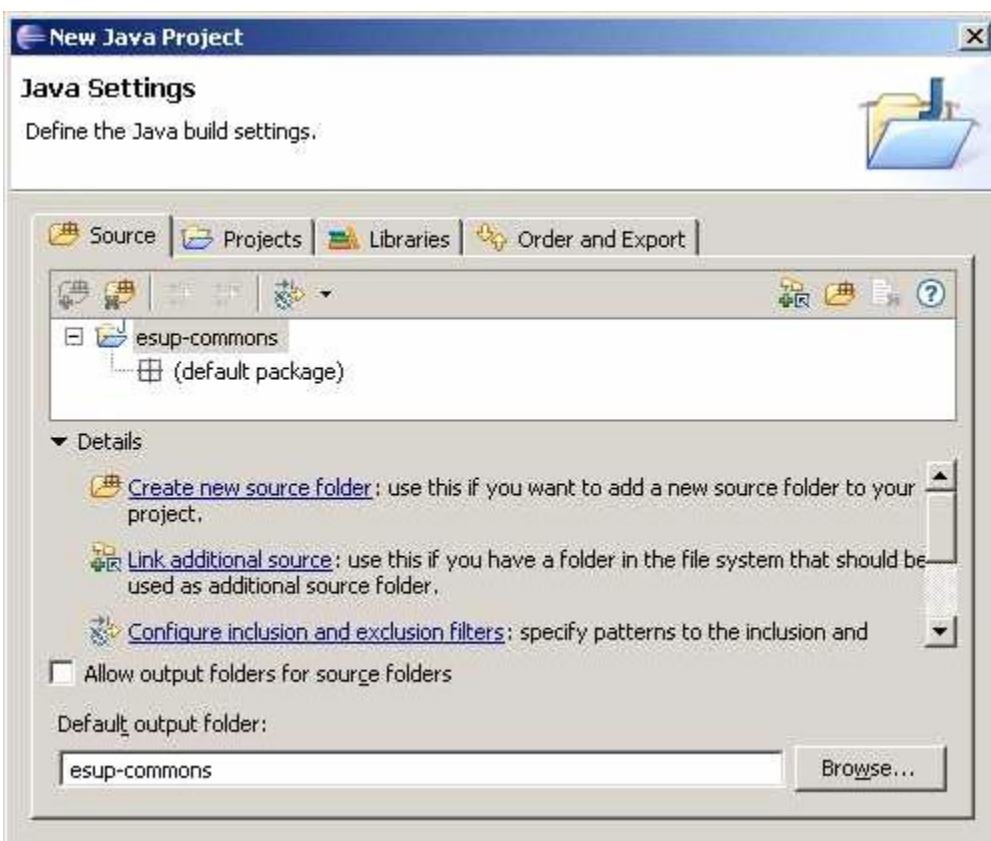
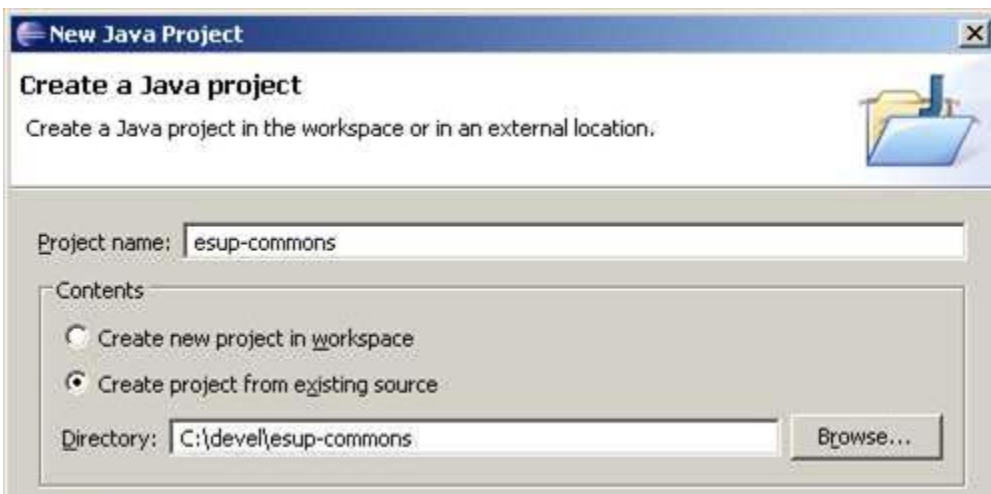


Use this location instead: <http://subversion.cru.fr/esup-commons/branches/trunk-1.3.x/esup-commons/>!



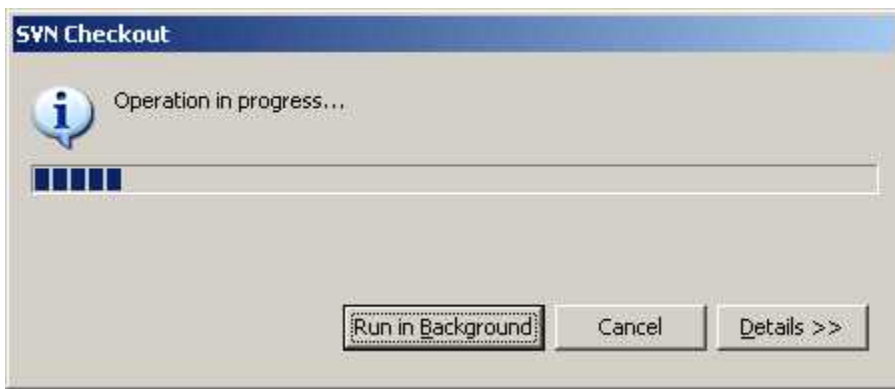


Create a new folder for the project (**c:\devel\esup-commons**), and create the project itself:



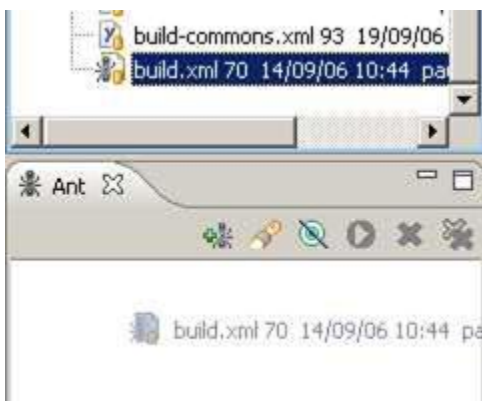
✓ The project is empty at this step, the *build path* will be configured later.



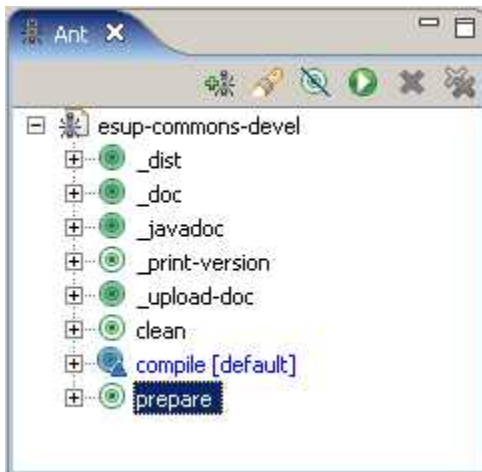


Create the folders

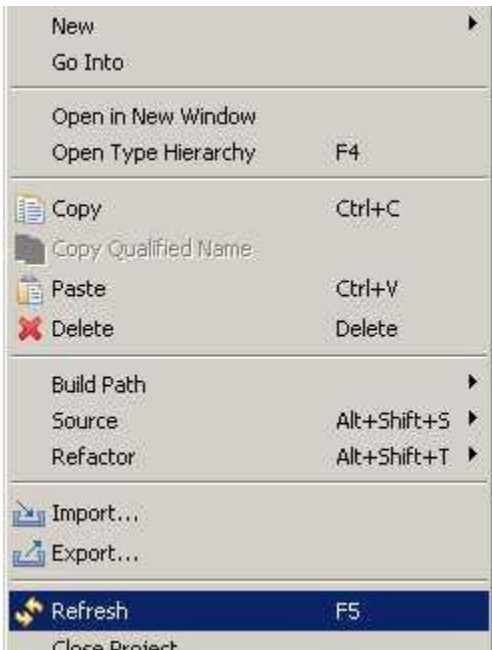
Drag the file **build.xml** to the *ant* view:



Launch the **prepare** task (the folder **/build/WEB-INF/classes** will be created, it is needed to configure the *build path*).



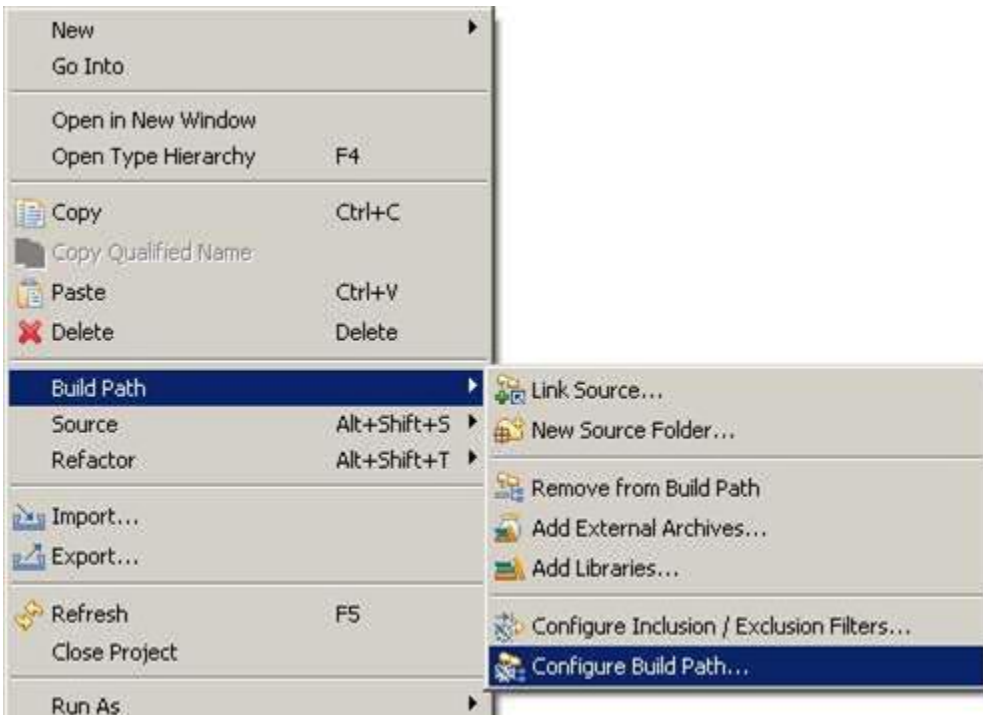
Refresh the project to show the folder **/build/WEB-INF/classes**:



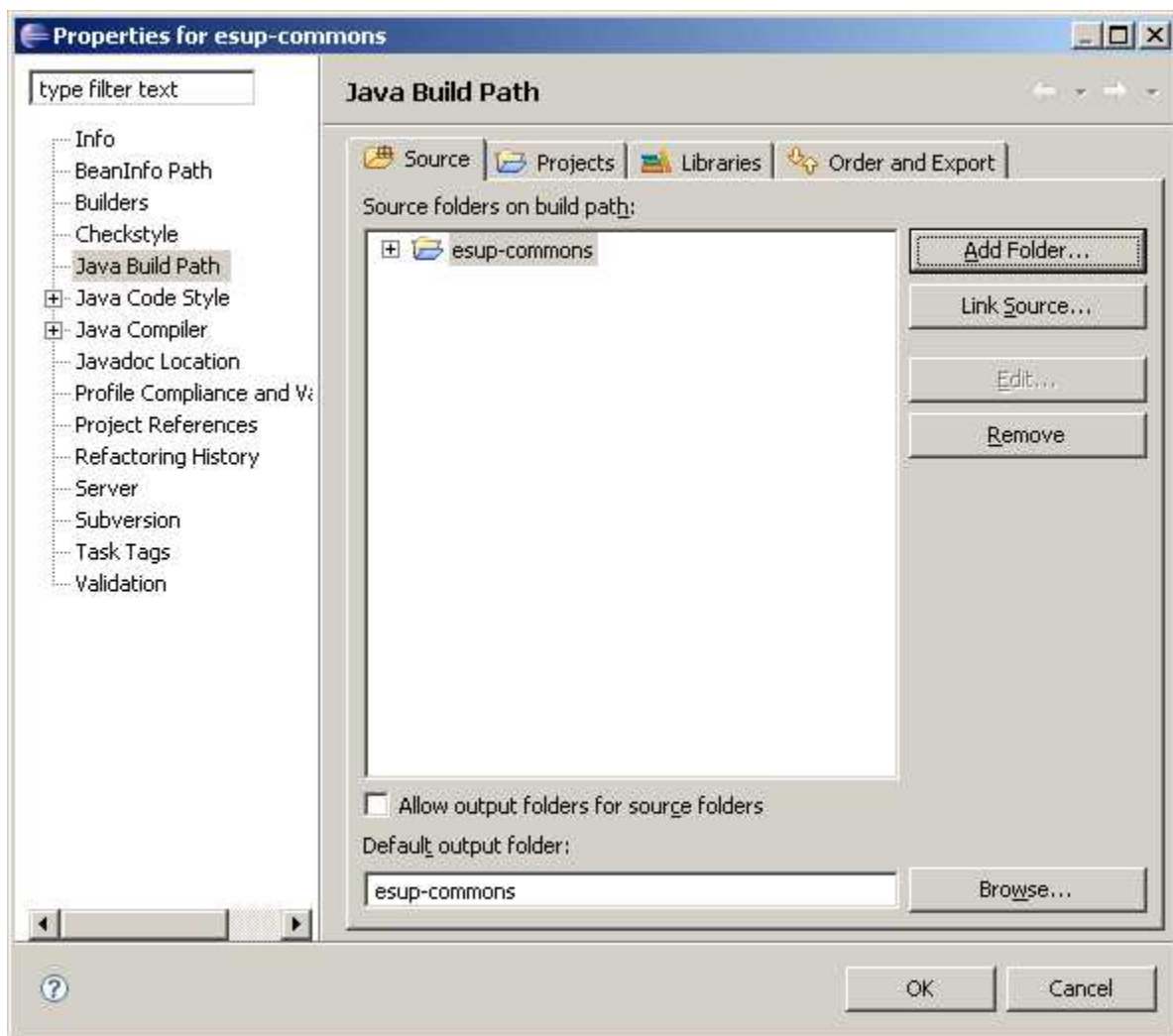
Refresh the *ant* view to clear remaining errors.

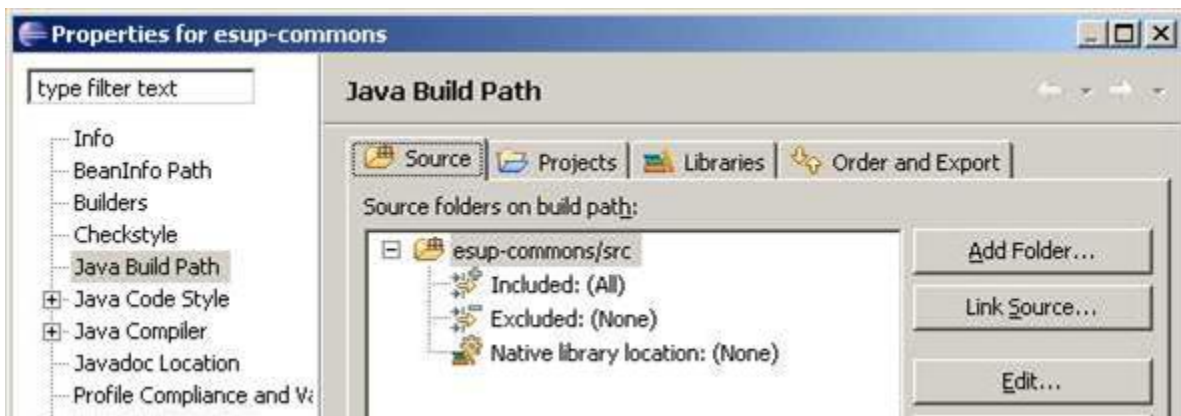
Configure the source folder, the build path and the libraries

Configure the *build path*:

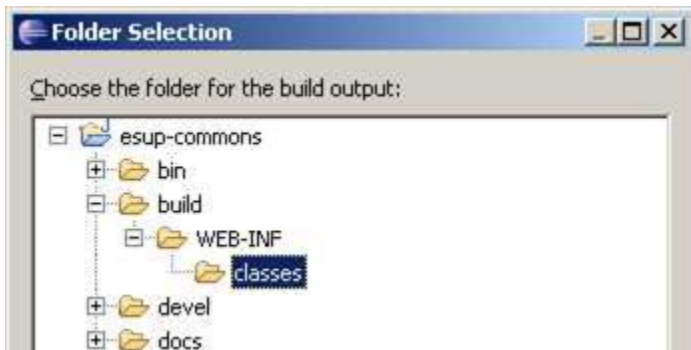


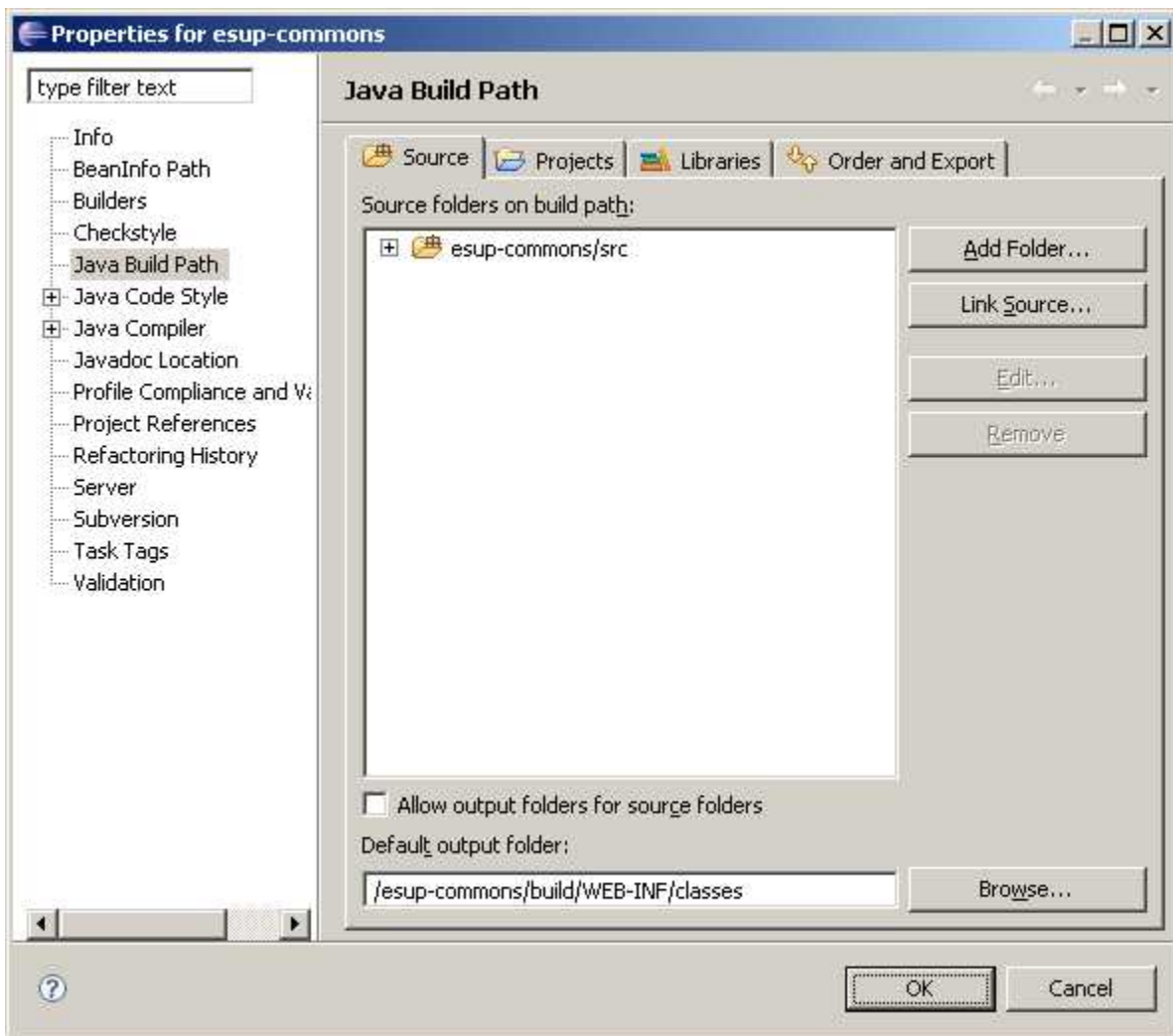
Define the folder **/src** as the source folder of the project:



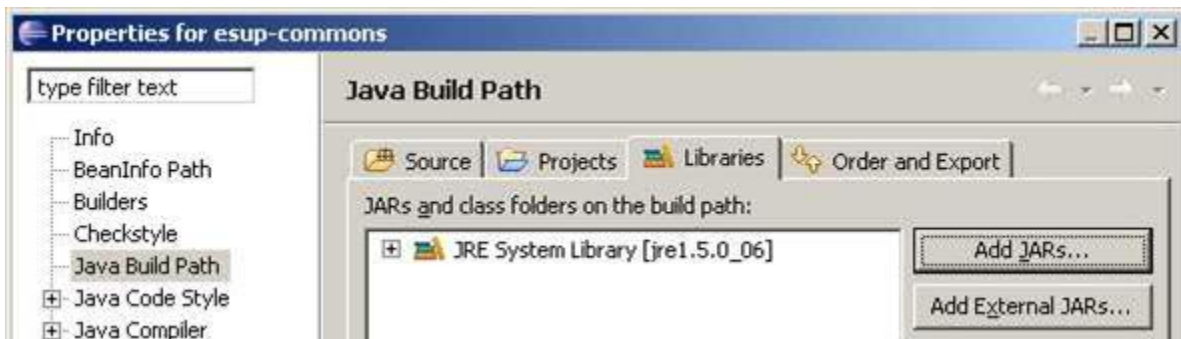


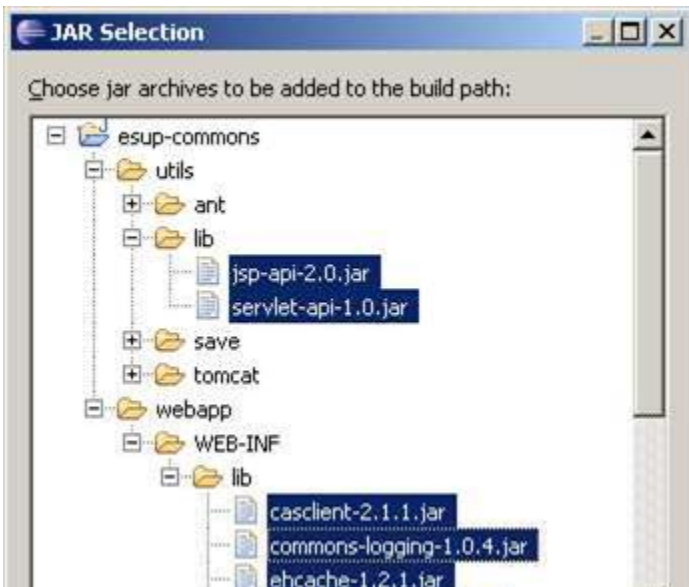
Update the output folder used by the compiler:



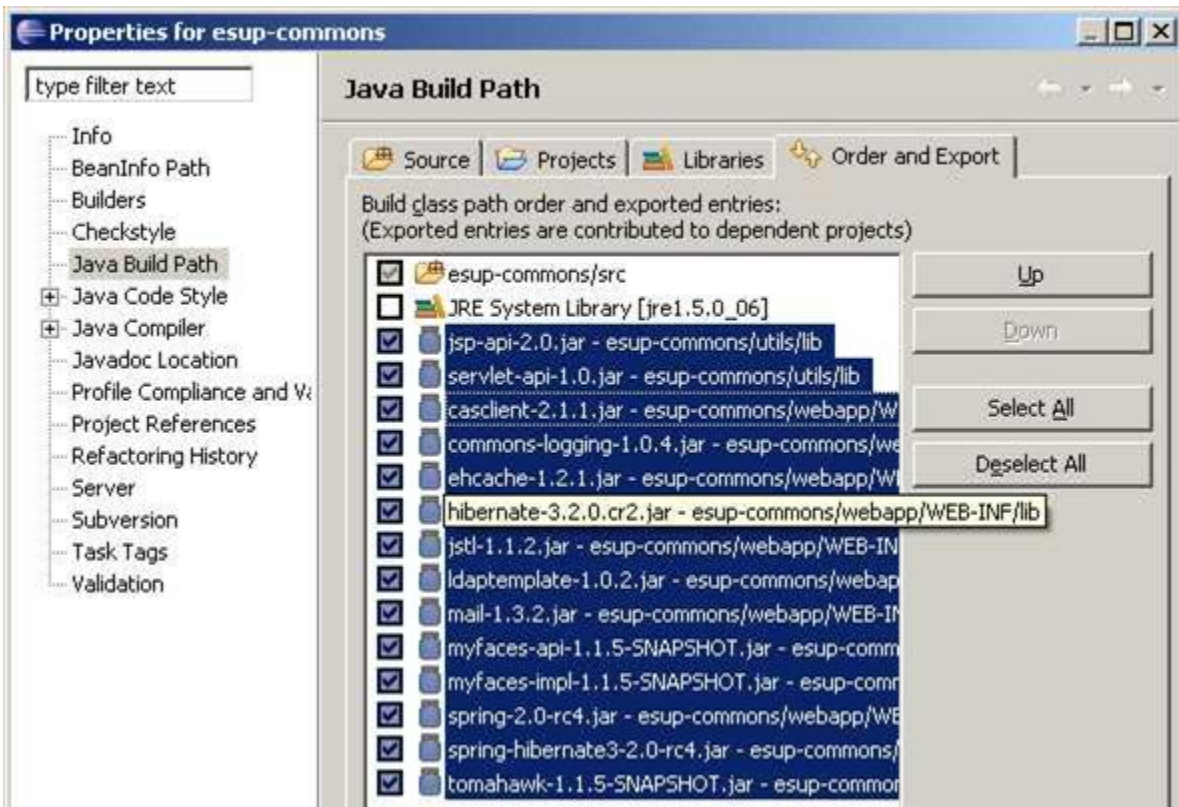


Add all the libraries of folders **/utils/lib** and **/webapp/WEB-INF/lib** (they are not all present on the screenshot below):



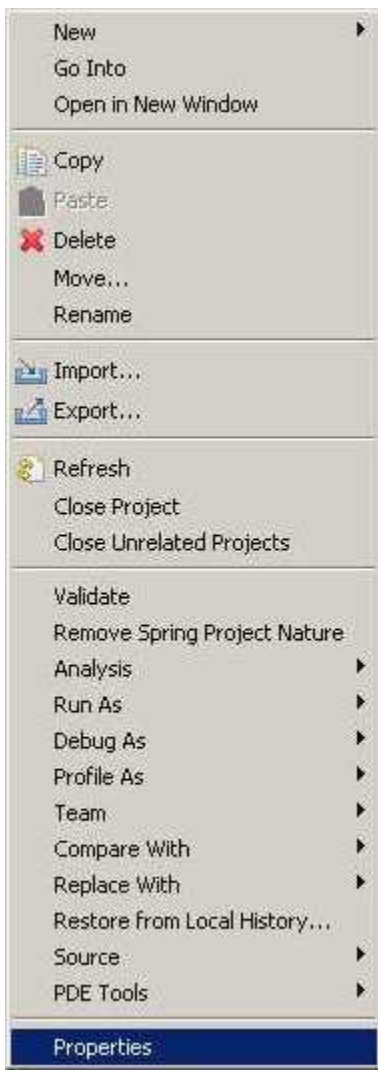


Export the libraries to make them available to all the projects that will later depends on the *esup-commons* project:

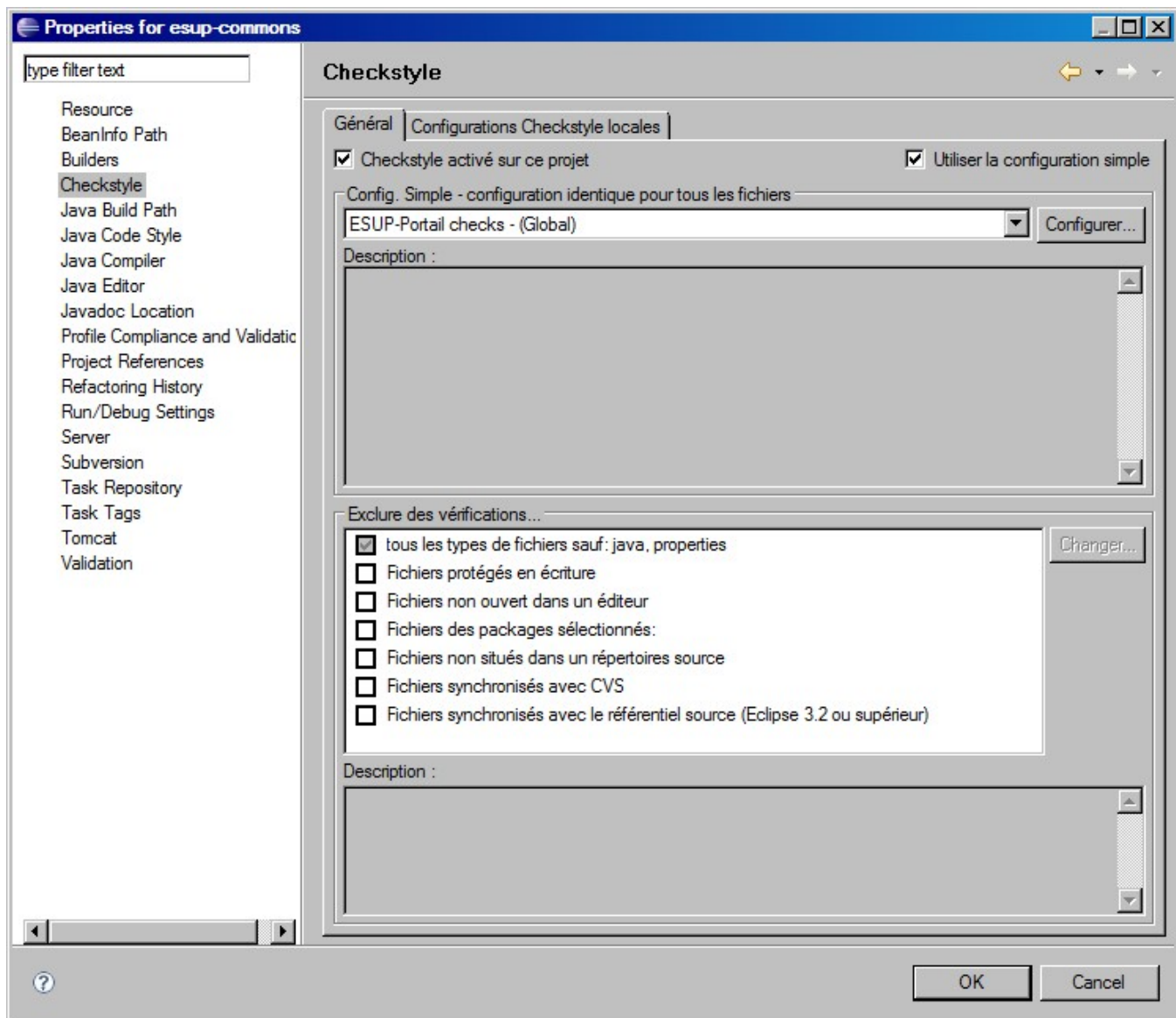


Apply *Checkstyle* to the *esup-commons* project

Right-click on the project to edit its properties:



Enable *Checkstyle* for the project:



Checkstyle warning messages should now appear in the *Problems* view.

The *esup-commons* project is now ready to be used.